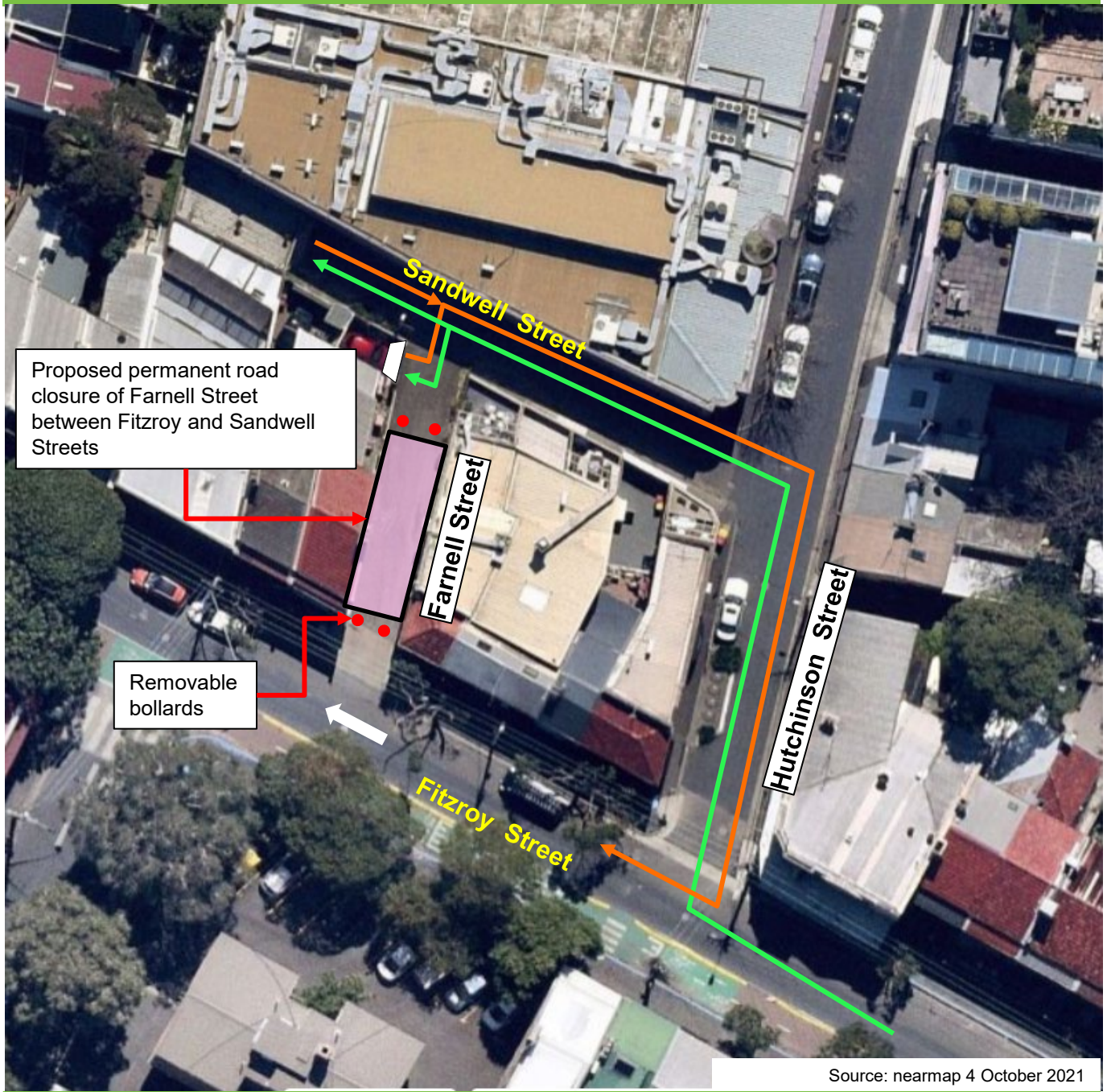


Attachment A

<h2>Concept Plan</h2>

Farnell Street, Surry Hills

Proposed permanent road closure between Fitzroy and Sandwell Streets.



Removable bollards



Proposed permanent road closure of Farnell Street between Fitzroy and Sandwell Streets



Alternate routes to Farnell and Sandwell Streets from Hutchinson Street

